

J.A.K. Travel Ltd

Tours 2026



Buckingham Palace from St. James Park

Royal Connections

J.A.K. Travel Ltd

368 Bradford Road
Sandbeds, Keighley. BD20 5LY

Telephone: 01274 566200

Email: office@jaktravel.co.uk

Web: www.jaktravel.co.uk

REVISED
EDITION
DECEMBER 2025



Financial Security Statement

The combination of travel services offered to you is a package within the meaning of the Package Travel and Linked Travel Arrangements Regulations 2018.

Therefore, you will benefit from all rights applying to packages; JAK Travel Ltd will be fully responsible for the proper performance of the package as a whole.

Additionally, as required by law, JAK Travel Ltd have protection in place to refund your payments and, where transport is included in the package, to ensure your repatriation in the event that they become insolvent.

JAK Travel Ltd are members of the Bonded Coach Holiday Scheme, overseen by The Association of Bonded Travel Organisers Trust Limited. This is a government approved consumer protection scheme. This ensures that in relation to the coach package holidays described in this brochure (or website) that a Bond, which may be called upon in the unlikely event of the member's Insolvency, protects the clients' monies. Clients are recommended to inspect the current membership certificate at our registered office or alternatively go to

www.abtot.com/bch-abtot-members-directory/ or telephone 0207 065 5316 to confirm current membership.

Your attention is also drawn to the Bonded Coach Holiday Trading Charter that will apply to these coach package holidays.

Details of the Package Travel and Linked Travel Arrangements Regulations 2018 can be found at: **The Package Travel and Linked Travel Arrangements Regulations 2018** (legislation.gov.uk)



How to book

- 1) Phone us on **01274 566200** to reserve your seat
- 2) Then **either**; Send a deposit of **£25.00 per person** cheques made payable to;

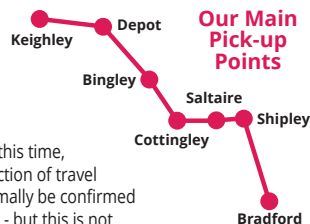
J.A.K. Travel Limited
368 Bradford Road
Sandbeds
KEIGHLEY
BD20 5LY

- Or; do it all on the phone with your 'plastic' - We take most Debit & Credit Cards
- 3) We will then send your confirmation and invoice
- 4) You send us the balance six weeks before the trip date (no further reminder is sent)
- 5) We will send tickets, luggage labels, etc. approximately two weeks before departure
- 6) Last - but by no means least - **Enjoy your trip!**

Our Departure Points

- **Bradford** - Nelson Street, near the Interchange
 - **Shipley** - in the Market Place - near Costa
 - **Saltaire** - on the A650, near the roundabout by the Old Tramsheds
 - **Cottingley** - Bus Stops at Cottingley Bar
 - **Bingley** - on Main Street near Boots/Lidl
 - **Keighley** - on Hanover Street
 - **Depot** - J.A.K compound on Bradford Road, Sandbeds
- * Pick ups at Riddlesden, Crossflatts, Nab Wood and other places 'en route' on request.

The departure times shown in the brochure are always from Bradford. Other pick-ups will usually be before this time and occasionally after this time, depending on the direction of travel (Pick-up times will normally be confirmed at the time of booking) - but this is not a long, drawn out process - **the entire run normally takes only 45 minutes!**



Other than in very exceptional circumstances, once you have boarded the coach, you will remain with the same vehicle throughout the tour and you should not need to see your luggage until you reach your destination (or overnight stop, where a small overnight bag is recommended).

Depart Code: **A** - AFTER Bradford pick up run
B - BEFORE Bradford pick up run

Travel Insurance (2017 onward)

Changes to our Travel Insurance.

As from 1st January 2017, we will no longer hold the necessary authorisation given by the Financial Conduct Authority for the sale of Travel Insurance, nor offer or advise on Travel Insurance related matters. Therefore you will have to make alternative arrangements with other Travel Insurance providers.

We strongly advise all clients to take out travel insurance.

It is not compulsory by law to take out Travel Insurance for a coach tour within the United Kingdom, but it is compulsory for our tours operating outside mainland United Kingdom.

You will only be required to provide us with your Travel Policy details and emergency

contact number when travelling to Jersey, Isle of Man, Republic of Ireland, and European destinations.

We apologise for any inconvenience that this may cause, but increasing regulations within the Travel Industry have made the selling of Travel Insurance increasingly difficult to operate and uphold.

As a reminder, if you require more information on the attractions or hotels featured please ask us, or feel free to browse the internet

Torquay

Monday 16th – Friday 20th March 2026



Monday Departing Bradford at 08.00 we travel, with a stop en route, to **Droitwich Spa**, for a lunchtime break. A town of great charm, offering visitors plenty to see and do.

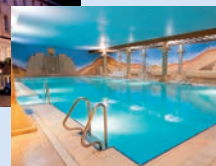
Tuesday We travel along the edge of Dartmoor to the historic city of **Plymouth**. Plymouth Hoe is forever associated with Sir Francis Drake and his game of bowls as he awaited the Spanish Armada. Also here are the famous steps used by the Pilgrim Fathers, whilst the Mayflower Museum provides an insight into the famous voyage and the events after the pilgrims landed in the New World, whilst 'The Box' is an award winning museum highlighting natural history. As well as a selection of independent shops, there are three shopping centres for you to explore. (No admissions included).

Wednesday Today you are free to enjoy the resort at your leisure.

Thursday We visit **Bicton Park Botanical Gardens**, where there are nearly 300 years of horticultural history on display in these magnificent Grade I listed gardens. The superbly landscaped park combines 18th century tranquillity with modern amenities including glasshouses, a countryside museum, Bicton Woodland Railway, nature trail and more. The facilities include a restaurant and shop. From here we visit the historic city of **Exeter** allowing you time to explore the numerous attractions including the magnificent cathedral, shopping centres and the historic Quayside with its fascinating history, pubs and restaurants.

Friday We travel home, with stops en route, arriving mid evening.

The Hotel



The Derwent Hotel has contemporary decor, a relaxed atmosphere and a friendly team to look after you. The bedrooms are located over 4 floors with lift access. There is a spa, pool, plus daytime and evening entertainment to keep you amused. The hotel has a lift.

Hotel: TLH Derwent Hotel, Belgrave Rd, Torquay TQ2 5HS Telephone: 01803 400100

This 5 day tour includes:

- A full itinerary with visits and tours as described above
- A good quality hotel
- 4 nights dinner, bed & breakfast

Prices (Per Person):

Twin / Double **£ 355.00**
Single (No availability) £ 435.00

Tour availability updated 19/11/25

Depart Code B

The Hidden Side of the Lake District

Monday 23rd – Thursday 26th March 2026



Monday Departing Bradford at 09.30 we travel to **Settle** for a morning tea/coffee break before visiting **Kendal** with its mix of charming shopping and streets. In addition, there is an attractive riverside walk to enjoy.

Tuesday We travel to **Barrow-in-Furness** to join our scheduled train for the **scenic journey to Carlisle** via the Cumbrian Coast Line, with spectacular views as you pass through the entire length of the Lakes to **Carlisle**, which is an historic city with a wonderful Cathedral, Castle and a range of shopping including 'The Lanes' indoor mall.

Wednesday Today we will undertake a circular tour of the heart of the Lake District. Visiting **Conistown** with its quaint shops and lakeside views, then on to **Ambleside**, and later bustling **Bowness-on-Windermere**.

Thursday We start the journey home with a visit to **Sizergh Castle**, a striking medieval manor and home to the Strickland family for over 750 years, which houses items collected by the family over the centuries. The tranquil gardens include a Stumpery, Rock Garden and Kitchen Garden, and the daffodils should be in full bloom. We travel home arriving early evening.

The Hotel



Tucked away in the tranquil Lyth Valley, the hotel is set in landscaped gardens complete with a pond and ducks. It has 58 elegant bedrooms equipped with TV, hairdryer and tea/coffee making facilities. There is no lift, but some ground floor rooms are available. The restaurant overlooks the countryside and serves dishes with produce from its

own kitchen garden. There is a homely bar, comfortable lounge plus an indoor swimming pool and sauna. Spa treatments are available but chargeable.

Hotel: Damson Dene Hotel, Crosthwaite, Nr Bowness on Windermere LA8 9JE

This 4 day tour includes:

- A full itinerary with visits and tours as described above
- A good quality hotel
- 3 nights dinner, bed & breakfast

Prices (Per Person):

Twin / Double £ 495.00
Single
(twin/double for sole use) £ 585.00
National Trust Reduction - £ 13.00

Depart Code A

Greenwich, Cutty Sark and Eltham Palace

Tuesday 7th – Thursday 9th April 2026

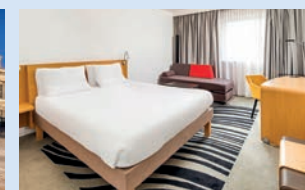


Tuesday Departing Bradford at 08.30 we travel, with a stop en route, to **Saffron Walden**, a delightful market town with historic buildings and a range of shops and eateries. We then travel to our hotel in **Greenwich**, arriving mid-afternoon to enable you to start to explore the area.

Wednesday Today you are free to enjoy the many attractions of Greenwich. **Included is a day pass to the Royal Museums in Greenwich**, which include the **Royal Observatory, Cutty Sark, Queens House and National Maritime Museum**. The Cutty Sark represents the pinnacle of clipper ship design and offers a glimpse into life at sea during Victorian Times. The Royal Observatory provides the opportunity to stand astride the Greenwich Meridian with one foot in the east and the other in the west. Queens House is now an art gallery set in a most beautiful building, and the Maritime Museum holds the historic story of Britain at sea.

Thursday Today we visit **Eltham Palace**, a unique marriage between a medieval and a Tudor palace and a 1930's millionaire's mansion. It was a royal residence, with Henry VIII being the last monarch to spend significant time there. The house consists of a medieval great hall with an Art Deco extension. We travel home, with two stops arriving mid evening.

The Hotel



The hotel is located in the bustling village like centre of Greenwich, handy for attractions, shops and eating outlets. It is contemporary in design with spacious bedrooms all with walk in showers and bath, tv, and tea/coffee making facilities. The hotel has air conditioning, WiFi, a stylish bar, fitness centre and a lift to all floors.

Hotel: Novotel London Greenwich, Greenwich High Road, London SE10 8JA

This 3 day tour includes:

- A full itinerary with visits and tours as described above
- A good quality hotel
- 2 nights bed & breakfast

Prices (Per Person):

Twin / Double £ 385.00
Single
(Double/Twin for sole use) £ 565.00
English Heritage - £ 14.00

Depart Code B

Castles and Gardens of Scotland's Deep South

Monday 13th – Friday 17th April 2026



Monday Departing Bradford at 8.30 we travel, with a stop en route, to the historic market town of **Penrith**. The cobbled lanes of the town centre have a wealth of independent shops, boutique cafés and restaurants to explore, before heading to our hotel near Dumfries.

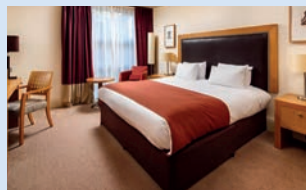
Tuesday Today we visit **Drumlanrig Castle**, built from red sandstone giving it the nickname of 'The Pink Palace'. It is regarded as one of the finest examples of 17th century Renaissance architecture in Scotland. The grand reception rooms, magnificent staircases and cosy parlours give you an intimate taste of life through the centuries. The Buccleuch Collection has many masterpieces including family portraits by Gainsborough and Reynolds, but pride of place goes to Rembrandt's 'An Old Woman Reading'. From here we return to **Dumfries**, situated on the River Nith, to enable you to explore the town with its numerous attractions including beautiful riverside walks.

Wednesday We explore the Solway Coastal Circuit taking in unspoilt villages, harbour side towns and ancient monuments, including the pretty harbour of **Kirkcudbright**. We then travel to **Threave Garden and Nature Reserve** to enjoy stunning views over the Galloway Hills and the Ken/Dee valley. The garden is the only Scottish garden dedicated to the training of horticulturists, whilst the nature reserve offers the chance to see ospreys, red kites and peregrine falcons. The gardens have a series of smaller gardens including a rocky and walled garden.

Thursday We visit the magnificent **Floors Castle**, ancestral home of the Dukes of Roxburghe for over 300 years. The castle is the largest inhabited house in Scotland and is situated on the banks of the River Tweed and overlooks Kelso. The sumptuous rooms boast an extensive collection of fine art, porcelain and tapestries. We, then, visit **Kelso**, a town with cobbled streets, elegant market square and ruins of an ancient abbey, and a selection of independent shops.

Friday We head for home, starting with a visit to **Keswick**, a market town in the heart of the Lake District with independent shops around the historic square. Nearby Hope Park has lovely flower beds and a café to enjoy, whilst Derwent Water is a short stroll away and offers spectacular views and gentle walks. We arrive home early evening.

The Hotel



It is a lovely hotel on the edge of Dumfries, set in beautiful parkland, and renowned for its welcoming atmosphere. The bedrooms have air con and are spacious, with comfortable beds. They have WiFi and tea/coffee making facilities. Plus there is a relaxed bar/lounge and restaurant to enjoy. The hotel has a lift.

Hotel: Holiday Inn, The Crichton, Bankend Road, Dumfries DG1 4UQ

This 5 day tour includes:

- A full itinerary with visits and tours as described above
- A good quality hotel
- 4 nights dinner, bed & breakfast

Prices (Per Person):

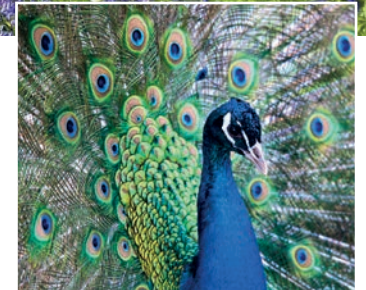
Twin / Double	£ 505.00
Single (No availability)	£ 645.00
National Trust Reduction	- £ 7.00

Tour availability updated 19/11/25

Depart Code A

Garden Highlights of Cornwall

Sunday 19th – Friday 24th April 2026



Sunday Departing Bradford at 08.00 we travel with stops en route to our hotel.

Monday We travel to the famous **Lost Gardens of Heligan**, which 30 years ago were unknown and unseen, lost to the brambles of time since the outbreak of World War I, when the gardeners went off to war with most not returning. Ever since, Europe's largest garden restoration project has been underway, with a voyage of discovery as the years of neglect are stripped away. There are now 200 acres with a jungle, pleasure grounds, Italian Garden and Victorian Productive Garden.

Tuesday Today we visit the working fishing port of **Padstow**, situated on the banks of the River Camel. Recently known for the influence of Rick Stein, it has become a thriving tourist resort. From here, we visit **Pencarrow House and Garden**, a Grade II listed country house and family home for almost 500 years. The house contains fine paintings including family portraits by Sir Joshua Reynolds, and delicate porcelain and china including Meissen and Worcester. The highlight is a large Qianlong rose bowl known as the Pencarrow Bowl, specially made for the family. The gardens range from formal gardens to ancient woodlands and include a sunken Italian Garden with a quatrefoil fountain and palm house and grotto.

Wednesday Today you are free to enjoy the beautiful resort of **Newquay** at your leisure.

Thursday We start with a visit to **Falmouth**, famous for its maritime history, where you will have a chance to explore its shops, galleries and harbour. Later we visit **Trelissick**, a wonderful garden, with views over the River Fal and is situated on its own peninsula. Visitors can explore meandering paths through the garden leading to exotic plants and formal lawns with herbaceous borders.

Friday We travel home, with stops en route, arriving home mid evening.

The Hotel



The Fistral Beach Hotel and Spa is an adults only hotel, with spacious and contemporary public areas and stunning views across the bay. It has 71 comfortably furnished, well equipped bedrooms, plus modern restaurant and lounge bar in which to relax. There are excellent leisure facilities which include an indoor pool, Jacuzzi, sauna and steam room. The hotel has a lift.

Hotel: Fistral Beach Hotel and Spa, Newquay TR7 1PT. Telephone: 01637 852 221

This 6 day tour includes:

- A full itinerary with visits and tours as described above
- A good quality hotel
- 5 nights dinner, bed & breakfast

Prices (Per Person):

Twin / Double	£ 795.00
Single	
(Double/Twin for sole use)	£ 915.00
National Trust Reduction	- £ 17.00

Depart Code B

Both Sides of the Border

Monday 27th April – Friday 1st May 2026



Monday Departing Bradford at 09.00 we have a morning break in picturesque Bedale, before visiting **Hexham**. Hexham is a delightful market town, with the beautiful Sele Park and Gardens in the town centre. Nearby is the splendid 12th century Hexham Abbey, one of the earliest sites of Christianity in the country.

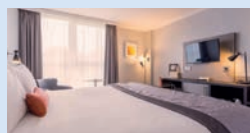
Tuesday This morning we visit **Morpeth**, an historic traditional charming market town with a luxury high street, and attractive riverside walks. Later we visit **Wallington**, home to 10 generations of the Trevelyan family and contains many treasures collected by them. The Walled Garden is regarded as one of the finest in the country, and is reached by a woodland walk. There is a chance to see red squirrels and woodpeckers on the estate.

Wednesday We start the day with a visit to **Berwick-upon-Tweed**, an historic town which changed hands between England and Scotland many times over the centuries and is famous for the Elizabethan Ramparts that surround much of the town and provide a delightful walk with views over the town and the North Sea, as well, as of the three bridges into the town which include the 17th century 'Old Bridge' and the stunning 28 arch Royal Border Railway Bridge. We later travel to nearby **Paxton House**, situated on the Scottish bank of the River Tweed, where we take a guided tour. This is one of the finest Palladian Houses in Britain with pre-eminent collections of Chippendale furniture, Georgian costume and paintings from Scotland's National Gallery. There are two main garden areas, flower garden terraces with well stocked herbaceous borders and a Well Garden with ornamental shrubs and ferns.

Thursday Today is spent at **Craggside**, a marvel of Victorian design, innovation and engineering and was the brainchild of the 1st Lord Armstrong. Illuminated by hydro-electricity, the house is filled with Victorian gadgets for efficient modern living. The grounds contain man-made lakes, waterfalls and fantasy mountain landscapes.

Friday We make our way home via **Barnard Castle**, famed for its ruined castle, independent shops and riverside walks. We arrive home early evening.

The Hotel



Gosforth Park hotel sits in a peaceful setting where you can enjoy a walk in the sprawling grounds, or take a few laps in the leisure club's indoor pool, or wind down in the spa bath. (Residents must book for chargeable spa treatments). Gosforth Park has 151 air conditioned bedrooms, all tastefully decorated. With free Wi-Fi and flat-screen TVs, plus tea and coffee making equipment. As well as a bar/lounge there is a casual restaurant to enjoy. The hotel has a lift.

Hotel: Holiday Inn Gosforth Park, Great North Road, Seaton Burn, Newcastle Upon Tyne NE13 6BP

This 5 day tour includes:

- A full itinerary with visits and tours as described above
- A good quality hotel
- 4 nights dinner, bed & breakfast

Prices (Per Person):

Twin / Double £ 595.00
Single (No availability) £ 760.00

Tour availability updated 19/11/25

Depart Code B

The Beautiful South Downs

Monday 4th – Friday 8th May 2026



Monday Departing Bradford at 08.00 we travel, with stops en route, to our hotel

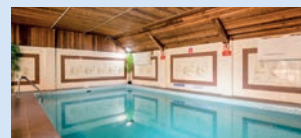
Tuesday We visit the **Weald and Downland Living Museum**, an open-air museum with over 50 original buildings spanning a period of 600 years. Site of the hugely popular BBC TV series 'The Repair Shop' we spend the morning in this remarkable microcosm of South East England history. (Please note the actual Repair Shop is not accessible). We, then, head for **Chichester** to allow you to explore the many attractions of this historic city, which include Roman City Walls, a magnificent cathedral, and a variety of shopping.

Wednesday We visit **Arundel Castle**, situated in magnificent grounds overlooking the River Arun, the oldest part of which dates back to 1068. Home to the premier peer of England, the castle has been partially remodelled but still contains many original features such as the Norman Keep, medieval Gatehouse and Barbican. Inside there is fascinating furniture, tapestries and paintings which include works by Van Dyck, Gainsborough and Canaletto. The castle has 40 acres of beautifully landscaped grounds which include a Stumpery, Herbaceous Borders and Kitchen Garden. The Fitzalan Chapel has its own garden planted in white. There will also be time to explore the surrounding town with its historic buildings.

Thursday We enjoy a delightful **90 minute cruise on the Wey and Arun canal** along the idyllic Loxwood Link section. Then to **Parham House and Gardens**, one of the finest Elizabethan houses in the country, set at the foot of the South Downs. The house boasts a Great Hall and Long Gallery with many rare and precious collections of paintings, furniture, needlework and antiques. The gardens feature pleasure grounds, walled gardens, orchard and glasshouse.

Friday We travel home, with stops en route, arriving mid-evening.

The Hotel



Hotel: Beachcroft Hotel & Beach Hut Suites, Clyde Road, Bognor Regis PO22 7AH

Located in a residential area on the seafront, the hotel is just a stones throw from the beach, and is a 15 minute walk along the promenade into the town centre. There are 37 traditional bedrooms equipped with TV, hairdryer, and tea/coffee making facilities. There is a cosy bar and an outside terrace with coastline views to enjoy, and there is an indoor swimming pool. The hotel does NOT have a lift, but there are ground floor rooms on request.

Tour availability updated 19/11/25

This 5 day tour includes:

- A full itinerary with visits and tours as described above
- A good quality hotel
- 4 nights dinner, bed & breakfast

Prices (Per Person):

Twin / Double £ 595.00
Single (Limited) £ 690.00
(Double/Twin for sole use) £ 690.00
Sea View Supp. (Per Room) £ 95.00
Sea View Supplement with balcony (Per Room) £ 145.00

Depart Code B

Perth and Fife – Royal Connections a Plenty

Monday 11th – Thursday 14th May 2026



Monday Departing Bradford at 08.00 we travel, with stops en route to our hotel in **Perth**, where you will have time to explore the attractions of this delightful city.

Tuesday This morning we visit the beautiful restored gardens at the historic **Teasses Estate** for a guided walk by the head gardener. As we walk amongst the spectacular gardens we will hear more about the history and restoration. After enjoying some refreshments and home baked goods we drive to the seaside town of **St Andrews** for time at leisure. Famous for its Royal connections and golf, it's the perfect place to explore independent shops, café and historical sights.

Wednesday Today we visit **Glamis Castle**, childhood home of the Queen Mother, and birthplace of Princess Margaret. The castle has evolved into a stunning architectural treasure, with every room having its own story. The beautiful gardens include a formal Italian Garden, mixed woodland and Pinetum. We then travel to **Dundee**, where you have time to explore at your leisure. Attractions (if desired), include the Victoria and Albert Museum Dundee, Shackleton's ship RRS Discovery, plus the central shopping area.

Thursday We start with a visit to **Scone Palace**, historical site of the crowning of the Kings of Scotland, where you can see a replica of the Stone of Scone, upon which the ancient kings were crowned (the original is in Perth at a special exhibition, you may wish to visit). The Long Gallery is where King Charles II strode to his coronation in 1661, and both the Old and New Pretenders visited the palace. From here we journey home, with stops as necessary arriving home mid evening

The Hotel



The Royal George Hotel is located on the banks of the River Tay in the heart of Perth, and has been attracting guests to Scotland since 1773, making 2026 its 253rd year in business! There are 45 recently re-decorated ensuite bedrooms with free WiFi and tea/coffee making facilities. There is fitness suite, games room and bar in which to unwind. The hotels menus reflect its long Scottish heritage. Please note though the hotel does not have a lift or ground floor rooms, and has various steps to enter and within the property.

Hotel: Royal George Hotel, Tay Street, Perth PH1 5LD

This 4 day tour includes:

- A full itinerary with visits and tours as described above
- A good quality hotel
- 3 nights dinner, bed & breakfast

Prices (Per Person):

Twin / Double	£ 530.00
Single	£ 605.00

Depart Code A

Castles, Cobbles and Cream Tea in Kent

Monday 18th – Friday 22nd May 2026



Monday Departing Bradford at 08.00 we travel, with a stop en route, to **Saffron Walden**. The town is famous for its historic buildings and independent shopping.

Tuesday We visit **Leeds Castle**, dating from the 12th century, which is surrounded by a moat and was once owned by Henry VIII, who made it to a home for his first wife Catherine of Aragon. During the early 20th century it was transformed into an elegant retreat for the influential and famous including Sir Winston Churchill, Charlie Chaplin and John F Kennedy. In addition there are spectacular gardens, a bird of prey centre, and you will enjoy a **Cream Tea at the Castle View Restaurant**.

Wednesday We start the day with a visit to **Battle Abbey**, built by William the Conqueror on the site of his famous victory in 1066, supposedly on the exact spot where King Harold was killed. Next we take a train on the **Kent & East Sussex Railway**, for the journey from Bodiam to Tenterden taking in the beautiful High Weald countryside. Time then in **Tenterden** which is a delightful town with a selection of shops on its High Street.

Thursday We begin with a visit to **Penshurst Place**, a 14th century manor house with 11 acres of formal gardens. Built as a country retreat for the Lord Mayor of London, owners include the Dukes of Buckingham and King Edward VI. Next we visit **Royal Tunbridge Wells**, a former spa town known for its historic buildings including the 'Pantiles' a quaint colonnade featuring shops, open air cafés and galleries.

Friday We travel home with stops including a garden centre arriving home early evening

The Hotel



This upmarket hotel is a former 18th-century oast house, and is situated near the village of Penbury. It has 84 modern rooms come with free Wi-Fi, flat-screen TVs, tea and coffee making equipment and hairdryer. There is an elegant restaurant and cosy bar. The hotel does not have a lift, but ground floor rooms are available.

Hotel: Mercure Tunbridge Wells Hotel, Tonbridge Road, Penbury, Tunbridge Wells TN2 4QL

This 5 day tour includes:

- A full itinerary with visits and tours as described above
- A good quality hotel
- 4 nights dinner, bed & breakfast

Prices (Per Person):

Twin / Double	£ 570.00
Single	
(Double/Twin for sole use)	£ 690.00
English Heritage	- £ 14.00

Depart Code B

Llandudno

Friday 29th May – Monday 1st June 2026



Friday Departing Bradford at 09.30 we travel, with a stop en route, to the historic city of **Chester**, with its magnificent cathedral and Roman Walls. The wide variety of shopping includes the famous Tudor style two story 'Rows'.

Saturday We travel to **Llanberis** to join the **Llanberis Lake Railway**, for a round trip, taking in the beautiful scenery. Then to **Bodnant Gardens**, a Grade I listed 80 acre garden in the Conwy Valley with a mixture of formal gardens, informal shrub gardens, and riverside dells with waterfalls.

Sunday Today you are free to spend the day in resort with its numerous attractions.

Monday We start the journey home with a visit to **Erdigg**, a house rescued from dereliction in the 1970's and contains a treasure trove of fine furniture, textiles and wallpapers, set in an 18th century garden. The family had a unique relationship with their servants which is reflected in servants portraits on display. We arrive home early evening.

The Hotel



The Kensington Hotel in Llandudno is a classically styled Victorian, seafront hotel prominently positioned on the central promenade with spectacular views of the Great Orme and Llandudno Bay. It has a restaurant, and large comfortable residential lounges with views across the sea. For entertainment, there are two lounge bars, one with dance floor and facilities for live entertainment. All rooms include en-suite bathrooms, hair-dryer, tea and coffee making facilities and colour TV. There is a lift to all floors.

Hotel: Kensington Hotel, 6-8 Nevill Crescent, Llandudno, Conwy LL30 1AT Tel: 01492 876784

This 4 day tour includes:

- A full itinerary with visits and tours as described above
- A good quality hotel
- 3 nights dinner, bed & breakfast

Prices (Per Person):

Twin / Double	£ 385.00
Single (Limited)	£ 425.00
National Trust Reduction	- £ 30.00

Depart Code B

Gloucestershire and Blenheim Palace Delights

Thursday 18th – Monday 22nd June 2026



Thursday Departing Bradford at 09.00 we travel, with a stop en route, to **Worcester**, where you can explore the delights of this beautiful city situated on the bank of the River Severn, offering attractive riverside walks. The magnificent cathedral houses the tombs of King John and Prince Arthur, the elder brother of Henry VIII. The city hosts a variety of interesting buildings and shopping.

Friday We visit **Ledbury** with its significant number of Tudor style timber framed structures, including the Market Hall built in 1617. Today is **Ledbury Country Market day**, a true co-operative specialising in local produce. From here to **Tewkesbury**, where we will enjoy a 45 minute **guided tour of the magnificent Abbey**, dating back to Norman times. It is famous for its medieval stained glass, as well as a fine collection of Victorian stained glass. The Abbey has the largest Norman church tower in existence.

Saturday We start our day at **Sudeley Castle**, final resting place of Henry VIII's widow, Catherine Parr who lived and died here. In the afternoon we visit **Cheltenham**, a spa town known for its Georgian architecture.

Sunday We spend the day at **Blenheim Palace**, one of the finest houses in the world, a gift from Queen Anne to the Duke of Marlborough following his victory over the French. The interior is lavishly furnished and there are extensive grounds to enjoy. In addition, there is an exhibition for Sir Winston Churchill who was born here, and features personal items belonging to him.

Monday We start the journey home with a visit to **Stow-on-the-Wold**, a market town situated in the heart of the Cotswolds. The market square is known for its antique shops and a selection of traditional pubs and inns. We arrive home early evening.

The Hotel



The hotel is so named as it is a short drive from both named places. It has 125 air conditioned bedrooms which are bright and comfortable, and equipped with TV, hairdryer and tea/coffee making facilities. There is an airy restaurant and modern bar and lounge. There is a health club with indoor pool. The hotel has ground floor rooms.

Hotel: Holiday Inn Gloucester/Cheltenham, Crest Way, Barnwood, Gloucester GL4 3RX

This 5 day tour includes:

- A full itinerary with visits and tours as described above
- A good quality hotel
- 4 nights dinner, bed & breakfast

Prices (Per Person):

Twin / Double	£ 545.00
Single	
(Double/Twin for sole use)	£ 665.00

Depart Code B



Scotland's Far North

Sunday 5th – Saturday 11th July 2026



Sunday Departing Bradford at 07.30, we stop at motorway services, before we travel to **Drummond Castle Gardens**. The gardens, regarded as one of Scotland's finest were established in 1490 with the first formal gardens established in 1630's. Here you can enjoy the terracing and formal gardens with lovely views. From here we travel on to our overnight hotel in Pitlochry.

Monday We travel, with a short services stop en route, to **Dunrobin Castle**, the most northerly of Scotland's great houses. The castle which resembles a French chateau with its towering conical spires overlooks the Moray Firth. The inspiration for the gardens come from the Palace of Versailles and has a surprising range of plants. From here we travel to our hotel in Wick.

Tuesday Today is a full day excursion, on our coach, to **Orkney**, including return ferry crossings. **A guided tour with a local guide** will ensure that none of the highlights of this wonderful island are missed. These will include entry to both **Skara Brae** and the **Italian Chapel**.

Wednesday We visit the **Castle of Mey**, the much beloved home of the Queen Mother, which has been kept exactly as it was when she was alive. You can explore the gardens and enjoy the scenic views over the Pentland Firth. The rest of the day will be at leisure in **Wick**.

Thursday We travel south visiting **Inverness**, the capital of the Highlands, with its beautiful buildings and shopping, and delightful riverside walks. We then travel to **Perth** and our overnight hotel.

Friday Today you are free to explore **Perth** at your leisure. Situated on the River Tay, Perth has numerous attractions including a new museum housing the Stone of Destiny, which was used to crown Scottish Monarchs for centuries, here you can view the stone and listen to a short talk on its history (admission free at the time of writing the brochure).

Saturday We travel home with stops en route as required, arriving home mid evening.

Hotel - Overnight

Situated in the centre of Pitlochry, yet surrounded by award winning gardens, the hotel has 138 comfortable bedrooms, restaurant and bar lounge. There is free Wifi. The hotel has a lift.

Hotel: Fishers Hotel,
Pitlochry PH16 5BN

Hotel - 3 Nights

The Norseman Hotel overlooks the Wick River and is less than 5 minute walk to the centre of Wick. The hotel has 48 bedrooms situated either on the ground or first floor – there is no lift. There is also a lounge area, spacious bar, and restaurant which are all comfortable and welcoming.

Hotel: Norseman Hotel,
Wick KW1 4NL

Hotel - 2 Nights

The hotel claims to be the oldest in Scotland (opened 1699), and has a city centre location and is a short walk from the River Tay. It has 84 traditional bedrooms, there is a spacious bar, and light and airy restaurant. The hotel has a lift.

Hotel: Salutation Hotel,
Perth PH2 8PH

This 7 day tour includes:

- A full itinerary with visits and tours as described above
- A good quality hotel
- 6 nights dinner, bed & breakfast

Prices (Per Person):

Twin / Double (Twin Only) £ 995.00

Single (No Availability) £ 1,125.00

Tour availability updated 19/11/25

Depart Code A

Serenity in Surrey

Monday 27th – Friday 31st July 2026



Monday Departing Bradford at 09.00 we travel, with a stop en route, to **Banbury**, for a lunch time stop. The town is famous for Banbury Cakes, a spiced sweet pastry and the 'Fine Lady on a White Horse' from the nursery rhyme.

Tuesday We travel to **Polesden Lacey**, which is a 1,600 acre estate and home to rare birds and butterflies in the ancient woodland and rolling parkland. The Edwardian house is where the Queen Mother had her honeymoon and overflows with paintings, ceramics and fine French furniture. We return to the historic market town of **Dorking**, with its selection of arts and crafts shops, jewellers, eclectic vintage shops and antique centres.

Wednesday Today we travel to **Hampton Court Palace**, a jewel amongst English Palaces, originally built for Cardinal Wolsey and later owned by King Henry VIII. Highlights include the Great Hall, Tudor Kitchens, and the sumptuous state and private apartments. The stunning gardens include parterres and fountains and the world's oldest maze.

Thursday We visit **RHS Wisley**, regarded as the finest of their gardens, with 240 acres of formal and informal decorative gardens, several glasshouses and an extensive arboretum. There are several dining options including The Food Hall and the Glasshouse Kitchen, whilst picnic tables are available.

Friday We start the journey home with a stop at **Bicester Shopping Village**, with its range of outlets including many designer brands of clothing, jewellery, shoes and household goods. There are a range of dining options from cafés to restaurants and a farmshop.

The Hotel



heated outdoor pool. The hotel does not have a lift, but there is a stair lift from the ground floor to first floor.

Hotel: Mercure Box Hill Burford Bridge, Dorking RH5 6BX

The 4 star Mercure Hotels Box Hill sits at the foot of Box Hill, with the Mole River running at the bottom of the spectacular gardens. There are 57 en suite rooms offering complimentary Wi-Fi, flat-screen TVs and tea and coffee making facilities. There is a comfortable restaurant, cocktail bar and lounge to relax in, plus a

This 5 day tour includes:

- A full itinerary with visits and tours as described above
- A good quality hotel
- 4 nights dinner, bed & breakfast

Prices (Per Person):

Twin / Double £ 555.00

Single £ 710.00

(Double/Twin for sole use) £ 710.00

National Trust Reduction - £ 17.00

RHS Reduction - £ 14.00

Depart Code B

Welsh Treasures and the Royal Mint

Monday 3rd – Friday 7th August 2026



Monday Departing Bradford at 09.00 we travel, with a stop en route, to **Stratford-upon-Avon**, with its attractions associated with William Shakespeare. There is also a wide range of shopping to enjoy and riverside walks.

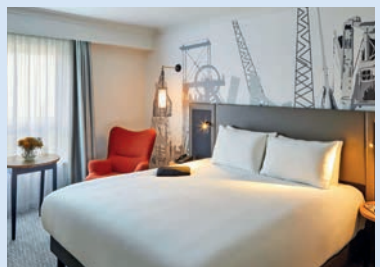
Tuesday First stop is **Caerphilly**, where you have a visit to **Caerphilly Castle**, the largest in Wales, dating back to the 13th century. You will also have time to explore the town. We then visit **St Fagans Castle and Gardens**, the castle being Grade I listed and dates from around 1580. Amongst the rooms available to view are the Library, Long Gallery and Guest Bedroom. The beautiful gardens include an Italian Garden, fish ponds, vinery and an exquisite Rosery.

Wednesday Today we start with a visit to the **Royal Mint Visitor Centre**, for an escorted tour of the production process. Then enjoy an engaging self-guided tour of static and interactive exhibits. This afternoon, we include a guided tour, on our coach, of the attractive city centre of **Cardiff and its Bay**.

Thursday We have a trip on the **Brecon Mountain Railway**, with vintage steam locomotives taking you through the spectacular scenery of the Brecon Beacons. **Penderyn Distillery** home of Welsh Whisky, where you can enjoy a **guided tour and tasting**.

Friday Our journey home includes a visit to **Evesham Shopping Village**, which contains a wide variety of outlets including a large garden centre with an extensive gift and household items area. We arrive home mid evening.

The Hotel



Located just 3 miles from the centre of Cardiff, this 4 star hotel is contemporary with 132 spacious bedrooms with complimentary Wi-Fi, flat-screen TVs, and tea and coffee making equipment., and with a Welsh theme running through its public areas. The hotel has a gym, restaurant and bar. The hotel has a lift.

Hotel: Mercure Cardiff North Hotel, Circle Way East, Llanedeyrn, Cardiff CF23 9XF

This 5 day tour includes:

- A full itinerary with visits and tours as described above
- A good quality hotel
- 4 nights dinner, bed & breakfast

Prices (Per Person):

Twin / Double	£ 555.00
Single (No Availability)	£ 695.00
English Heritage	- £ 10.00

Tour availability updated 19/11/25

Depart Code B

Royal Connections in London

Wednesday 12th – Friday 14th August 2026



Wednesday Departing **Bradford** at 08.30 we travel, with stops en route, to our hotel, where we are scheduled to arrive mid-afternoon allowing time for you to explore the surrounding area.

Thursday We travel on the coach dropping off at **Buckingham Palace** where we have a chance to explore the magnificent 19 State Rooms used for ceremonial occasions and official entertaining. Here, you can see wonderful furniture, art, and ornaments and learn about centuries of British History. The remainder of the day is at your leisure.

Friday We take a 20 minute walk from our hotel to **Kensington Palace**, birthplace and childhood home of Queen Victoria and home to many royals including Princess Margaret and Princess Diana. Here you can explore the State Rooms, special exhibitions and the famous sunken garden. We finish by having **afternoon tea in The Orangery at noon**, before walking back to the hotel and meeting our coach before travelling home arriving mid evening

The Hotel



In upmarket Kensington, this polished hotel is a 6-minute walk from High Street Kensington tube station, and an 11-minute walk from Hyde Park. Warm rooms with traditional furnishings provide flat-screen TVs, free Wi-Fi and, plus tea and coffee making facilities. The hotel is air conditioned, has a restaurant/bar/lounge, baggage room and a lift to all floors.

Hotel: Copthorne Tara Hotel, Scarsdale Place, Kensington London W8 5SY

This 3 day tour includes:

- A full itinerary with visits and tours as described above
- A good quality hotel
- 2 nights bed & breakfast

Prices (Per Person):

Twin / Double	£ 425.00
Single (Limited)	£ 560.00
(Double/Twin for sole use)	

Tour availability updated 19/11/25

Depart Code B



Friday Departing Bradford at 08.30, we head north, with a stop en route to the **Devils Porridge Museum**, an award winning site which tells the story of HM Factory Gretna, the greatest munitions factory on earth in World War One, where the devil's porridge (or cordite, an explosive) was mixed. There were 30,000 workers: 12,000 of them were women. Their contribution to the war effort helped women to achieve the vote. On then to our hotel and evening meal.

Saturday Morning will be at leisure at **New Lanark with an admission ticket** for the attractions, walks etc that tell the story of this model for an industrial community. We will make our way early afternoon for you to enjoy the delights of bustling historic **Edinburgh** at your own pace, before taking our seats for the 6.15pm 90 minute performance of the dramatic spectacle of this years **Edinburgh Tattoo**. Please note any meals after breakfast are at your own discretion.

Sunday Following a leisurely start we make our way south with a call at **Jedburgh**, a great place to experience authentic Scottish Border culture and history, with its ruined Abbey, Castle Jail Museum and Mary Queen of Scots House. The town offers lovely architecture and is surrounded by beautiful countryside. (No admissions are included today). We then make our way home with a further break, arriving mid evening

The Hotel



Hotel: New Lanark Hotel, ML11 9DB

The New Lanark Hotel is part of the UNESCO World Heritage site. The hotel has spacious en suite rooms, with TV, hospitality tray, hairdryer and Wifi. The restaurant overlooks the River Clyde and offers traditional Scottish dishes. There is a bar, and a rooftop garden with views of the river and surrounding conservation area. Plus there is a 16m swimming pool, sauna and steam room in which to relax. The hotel has a lift to all floors.

This 3 day tour includes:

- A full itinerary with visits and tours as described above
- A good quality hotel
- 1 nights dinner, bed & breakfast
- 1 night bed & breakfast

Prices (Per Person):

Twin / Double	£ 470.00
Single	£ 540.00

Depart Code A



Friday Departing Bradford at 09.00 we travel, with a stop en route, to **Barnard Castle**. This is an historic market town situated on the bank of the River Tees, where you can enjoy a variety of shopping.

Saturday You can enjoy the numerous attractions of **Durham** from our centrally situated hotel, including the magnificent cathedral which dominates the city, the riverside walks, and the quirky shops. After an early evening meal we travel to the highlight of the tour, the spectacular that is **Kynren**. As dusk falls, we take our seats in the Tribune for a voyage through English history, myth and legend. A show like no other, with a cast and crew of over 1,000, and with live animals, theatrics and pyrotechnics. You are taken on a nonstop adventure through time from the Romans, Vikings and Normans right up to the current day. *NB This is an outdoor evening event with no shelter so please dress suitably. Restrictions also apply to baggage and food/drinks being taken into the Tribune.*

Sunday After a leisurely start to the day we travel to **Tynemouth**, a coastal town with the medieval Tynemouth Priory and Castle standing on the headland. There are shops including a market specialising in art, crafts and bric-a-brac. We arrive home early evening.

The Hotel



TVs, and tea and coffee making equipment. There is a lift. Amenities include a casual restaurant, a coffee shop and a gym.

Hotel: Delta by Marriott, Durham Royal County, Old Elvet, Durham DH1 3JN

Overlooking the River Wear in the centre of Durham, this updated hotel dating from the 17th century is 11 minutes on foot from Durham Cathedral and 8 minutes' walk from Durham Castle. Refined air conditioned rooms come with Wi-Fi access, flat-screen

This 3 day tour includes:

- A full itinerary with visits and tours as described above
- A good quality hotel
- 2 nights dinner, bed & breakfast

Prices (Per Person):

Twin / Double	£ 355.00
Single	£ 425.00

Depart Code B

Isle of Wight

Monday 7th – Friday 11th September 2026



Monday Departing Bradford at 08.00 we travel, with a stop en route to **Royal Leamington Spa**, famed for its Regency architecture and parks including Jephson Gardens, with its waterside café. From here we travel to Portsmouth where we catch our ferry to cross to the Isle of Wight and our hotel.

Tuesday We visit **Osborne House**, the stunning seaside retreat of Queen Victoria. Here, you will see the magnificent Royal apartments, including private family rooms and bedrooms. There is also the chance to visit Swiss Cottage, a miniature chalet built for the royal children, with their own little garden plots. You can enjoy the Victorian Walled Garden much as Victoria and Albert did, and perhaps stroll along the Palm Terrace as designed by Prince Albert. From here we return to **Shanklin** to allow you to explore the delights including the famous Chine, a stunning woodland coastal ravine, with waterfalls, trees and lush vegetation with the chance to see red squirrels.

Wednesday Today we visit **Quarr Abbey**, a Benedictine monastery, where you can visit the Abbey church, Farm Shop and Tea Shop. Then to **Godshill** a quintessential English village, with some of the oldest architecture on the island. Godshill boasts a delightful medieval church, charming thatched cottages and a winding main street with traditional tearooms. We have included a visit to the **Model Village** as well.

Thursday Today we visit **Carisbrooke Castle**, the key to the islands defences over the centuries and one of the places King Charles I was imprisoned before his trial and execution. The battlements and keep provide panoramic views over the island. You can visit the room from where King Charles I twice tried to escape. We then visit the resort town of **Ventnor** with its Victorian architecture.

Friday We travel home with a stop at the historical market town of **Abingdon-on-Thames**, with its ancient buildings which have a charm and character of their own. From here we travel home arriving mid evening.

The Hotel



The Ocean View Hotel enjoys unrivalled views looking out to sea across Shanklin Bay. Nestling on top of Eastcliffe, it is situated a short distance from the beach, Shanklin village and nearby Sandown. There are 100 well equipped comfortable bedrooms

with free WiFi. There is a bright spacious restaurant, comfortable bar, indoor pool and quiet reading room. There is a lift to all floors. Premier Rooms are spacious front facing sea view rooms, with an enhanced package including bottled water, biscuits, flavoured teas, and small mint chocolates.

Hotel: Ocean View Hotel, Park Road, Shanklin, Isle of Wight PO37 6BB.

This 5 day tour includes:

- A full itinerary with visits and tours as described above
- A good quality hotel
- 4 nights dinner, bed & breakfast

Prices (Per Person):

Twin / Double	£ 530.00
Single (No availability)	£ 620.00
Sea View Supplement (request only, subject to availability)	£ 35.00
Premier Room Supplement (request only, subject to availability)	£ 65.00
English Heritage Reduction	- £ 30.00

Tour availability updated 19/11/25

Depart Code B

Scenic Lowland Scotland including The Trossachs and Glasgow

Monday 14th – Friday 18th September 2026



Monday Departing Bradford at 08.00 we travel, with a stop en route, to New Lanark for our lunch time break. **New Lanark World Heritage site** is a unique 18th century Mill Village sitting alongside the picturesque River Clyde.

Tuesday We visit the **Falkirk Wheel**, the world's only rotating boat lift, which was a Millennium Link project. Joining a boat you experience the thrill of rising over 100 feet from the Forth & Clyde Canal to the Union Canal We visit the spectacular **Stirling Castle**, most of which dates from the 15th and 16th centuries, and was one of the most used Scottish Royal residences, very much a palace as well as a fortress. There will be some time to explore the historic city itself.

Wednesday We travel to **Loch Katrine** to enjoy a scenic cruise taking in the spectacular views of the Trossachs. The rugged hillside that surrounds the loch was the birthplace of the outlaw turned hero Rob Roy MacGregor. From here we visit the popular town of **Callander**, with its attractive main street with an interesting selection of shops and cafés, before we visit the **Trossachs Woollen Mill** at nearby **Kilmahog**. The mill shop has a variety of gifts and souvenirs as well as a wide selection of fashion options, as well as its resident Highland cattle.

Thursday Today we travel to spend the day in **Glasgow**, where you can enjoy the many and varied delights. These include the Kelvingrove Museum, the vibrant shopping areas, or the rejuvenated riverside with its museums.

Friday We travel south with a lunchtime stop at **Moffat**, a delightful town with lovely shops and cafés, and a beautiful little park to enjoy. We arrive home early evening.

The Hotel



Hotel: Winnock Hotel, Old Gartmore Road, Drymen, G63 0BL

A warm Scottish welcome awaits you at The Winnock Hotel, located by the village green in pretty Drymen. There are 73 comfortable bedrooms in traditional style with tea/coffee making facilities. There is a large bright restaurant and a relaxing bar. There is no lift, but ground floor rooms are available.

This 5 day tour includes:

- A full itinerary with visits and tours as described above
- A good quality hotel
- 4 nights dinner, bed & breakfast

Prices (Per Person):

Twin / Double	£ 695.00
Single (all singles are small double rooms)	£ 865.00
English Heritage	- £ 13.00

Depart Code A

Norfolk Charms including Sandringham House & Bressingham Gardens

Monday 28th September – Friday 2nd October 2026



Monday Departing Bradford at 09.00 we travel, with a stop en route, to **Oxburgh Hall**. The Hall has been home to the same family for 500 years, and is a moated medieval manor house with Victorian Gothic interiors. The grounds include a Victorian garden, kitchen garden and orchard and French inspired parterre.

Tuesday We travel to the Victorian seaside resort of **Sheringham** to join the **North Norfolk Railway for a return journey to Holt** taking in scenery. From here we visit Cromer, with its lovely beaches and pier. Cromer Museum, housed in a row of fisherman's cottage details the history of the town, whilst the RNLI Museum charts the town's proud lifesaving heritage.

Wednesday We visit **Bressingham Gardens and Steam Museum**, where there are over 8,000 species and varieties of plants in 6 linked gardens over 17 acres. There is a selection of steam engines and vehicles to view and three narrow gauge railways.

Thursday This morning, we travel to **Sandringham House**, the much loved country retreat of the Royal Family. Here, you can view eight ground-floor rooms, largely unchanged from Edwardian times, where you can view stunning object d'art collected by and gifted to members of the Royal Family over the years.

Friday We start with a visit to the delightful market town of **Downham Market**, a bustling town full of historic buildings. Today is market day, where the stalls are set up in the town hall square. We travel home with a further stop, arriving home early evening.

The Hotel



The Wensum Valley Hotel is situated on the outskirts of Norwich. It has 90 traditionally furnished bedrooms equipped with TV, hair-dryer and tea/coffee making facilities. All rooms have walk in showers. The restaurant is blessed with lovely views, and there is a comfortable bar and lounge in which to relax, as well as a snooker room, darts, and pool table. Guests enjoy complimentary use of the leisure facilities which include a pool, sauna, steam room and spa bath. There is no lift, but ground floor rooms are available.

Hotel: Wensum Valley Hotel Golf & Country Club, Beech Ave, Taverham, Norwich NR8 6HP

This 5 day tour includes:

- A full itinerary with visits and tours as described above
- A good quality hotel
- 4 nights dinner, bed & breakfast

Prices (Per Person):

Twin / Double £ 640.00

Single (No availability) £ 770.00

National Trust Reduction - £ 12.00

Tour availability updated 19/11/25

Depart Code B

Magical Isle of Man

Monday 5th – Friday 9th October 2026



Monday Departing Bradford at 09.30 we stop at **Settle** for a mid-morning break, before we travel to Heysham to catch our Isle of Man Steam Packet ferry to the island.

Tuesday We join the **Isle of Man Steam Railway** for a scenic journey to **Port Erin**, where we join the coach which will take us to **Peel**, an attractive town in the shadow of the ruins of a once magnificent castle, where seals can often be seen in the harbour.

Wednesday We call at **Laxey**, where you will have a chance to view the **'Lady Isabella'**, the world's largest working watermill, and perhaps the best known image of the island. (no admissions included). We then join the **Snaefell Mountain Railway**, which dates from Victorian times and takes us from Laxey to the peak of the island's only mountain. We return to **Douglas** to give you time to explore the island's capital.

Thursday We plan to travel by coach to **Ramsey**, the delightful resort town and one of the most popular destinations on the island. The return journey will be riding on the **Victorian and Edwardian rolling stock of the Manx Electric Railway** back to Douglas, where time will be your own.

Friday We journey home, on the Isle of Man Steam Packet to Heysham, arriving home mid-afternoon.

NB Isle of Man travel card is included for 3 days which gives you freedom to explore -beyond the published itinerary.

The Hotel



Located within easy walking distance of central Douglas the 4 star Empress Hotel offers great hospitality, food, and service. All 104 bedrooms are warmly decorated and well appointed with tea/coffee making facilities, tv and free WiFi. There is a traditional bar, lounge and restaurant. There is lift access to all floors though there are some internal steps, and an 18 step access from the promenade front entrance.

Hotel: Empress Hotel, Central Promenade, Douglas, Isle of Man

This 5 day tour includes:

- A full itinerary with visits and tours as described above
- A good quality hotel
- 4 nights dinner, bed & breakfast

Prices (Per Person):

Twin / Double £ 600.00

Single (No availability) £ 670.00

Sea View Room (on request only)

Supplement per room + £ 100.00

Tour availability updated 19/11/25

Depart Code A

Autumn Colours of the New Forest

Monday 12th – Friday 16th October 2026



Monday Departing Bradford at 08.00 we travel, with a stop en route, to **Oxford** for our lunchtime break. Oxford is famous for its magnificent buildings, and also has a wide range of shops and eateries.

Tuesday We visit **Beaulieu and the National Motor Museum**. Here is one of the finest collections of cars, motorcycles and motoring memorabilia in the world. On display are legendary F1 cars, land speed record breakers and motoring pioneers. We then take a relaxing **cruise on the Beaulieu River** from the picturesque **Buckler's Hard**. We also explore the fascinating Maritime Museum and the 'Buckler's Hard Story' with its reconstructed 18th century cottage interiors.

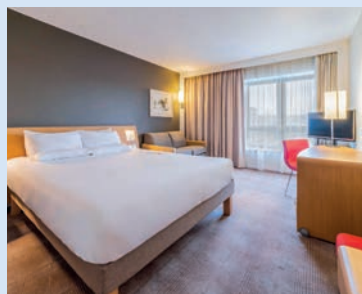
Wednesday We take a scenic tour of the New Forest taking in some of the most beautiful locations. **Lyndhurst** is known as the 'Capital of the New Forest' with its many independent shops, art galleries, museums and cafés. **Lymington** is a port town, facing the Isle of Wight, with an attractive marina, whilst **Christchurch** has a mix of historic buildings, and award winning beaches.

Thursday We explore the historic and cultural centre of **Southampton**, including a **half day guided tour**. Starting with the timber framed **Tudor House**, built in the late 15th century and providing unique insight into the lives of residents through the years. We visit the **Sea City Museum**, home of the **Southampton's Titanic Story** and the neighbouring **Southampton Art Gallery**.

Friday We start the journey home with a visit to the **Bicester Shopping Village**, with over 150 designer outlets, a range of dining options and a farm shop. We arrive home mid evening.



The Hotel



Hotel: Novotel, West Quay Road, Southampton SO15 1RA

In Southampton's centre the Novotel looks over the port, and is next to West Quay Retail Park, and less than 15 minutes' walk from Southampton's central shops. The hotel features The Elements Restaurant which offers modern food, and Elements Bar which serves drinks in stylish surroundings. All 121 rooms provide conveniences such as electric kettles, LCD TVs and free Wifi.

This 5 day tour includes:

- A full itinerary with visits and tours as described above
- A good quality hotel
- 4 nights dinner, bed & breakfast

Prices (Per Person):

Twin / Double	£ 685.00
Single	£ 900.00

Depart Code B

Autumnal Gateway to the Cairngorms

Monday 19th – Friday 23rd October 2026



Monday Departing Bradford at 08.00 we travel, with stops including a lunchtime break at a garden centre in the Scottish Borders, to our hotel situated in the very centre of **Pitlochry**.

Tuesday We visit the market town of **Crieff**, before we visit **Drummond Castle Gardens**. The gardens, regarded as one of Scotland's finest were established in 1490 with the first formal gardens established in the 1630's. Here you can enjoy the terraced and formal gardens with lovely views. We return to Pitlochry and the **Atholl Palace Hotel for a delightful cream tea**.

Wednesday We travel to nearby **Loch Tummel** to enjoy the panoramic '**Queens View**' originally named after the wife of Robert the Bruce. Next we visit **Blair Castle**, home to the Dukes of Atholl, and the only private army in the UK. The magnificent castle spans Medieval, Georgian and Victorian times, with paintings, furniture, and other contents that reflect the history of the Dukes of Atholl, whilst the splendid entrance hall has a wonderful display of weaponry including some from the battle of Culloden. The gardens include a nine acre Walled Garden, woodland grove and Sculpture trail. We later visit picturesque **Dunkeld**, situated on the River Tay, with its historic buildings including the magnificent Dunkeld Cathedral ruins.

Thursday Today we revel in the wonderful autumnal Highland scenery, arriving in the heart of the **Cairngorms National Park** and a visit to **Rothiemurchus Estate**. Here you will be joined by a **Ranger to accompany you on a coach safari** to get the best views of the surrounding countryside and a chance to meet the resident deer and Highland Cows.

Friday We travel home, with stops en route arriving home mid evening.

The Hotel



Situated in the centre of Pitlochry, yet surrounded by award winning gardens, the hotel has 138 comfortable bedrooms with tv, and tea/coffee making facilities. There is a restaurant and two bar lounges in which to relax. There is free Wifi. The hotel has a lift.

Hotel: Fishers Hotel, Atholl Road, Pitlochry PH16 5BN

This 5 day tour includes:

- A full itinerary with visits and tours as described above
- A good quality hotel
- 4 nights dinner, bed & breakfast

Prices (Per Person):

Twin / Double	£ 755.00
Single	£ 870.00

Depart Code A

Blackpool, Illuminations, and Leighton Hall 'Deck the Halls'

Monday 2nd – Wednesday 4th November 2026



Monday Departing Bradford 09.30, we visit **Watershed Mill** near Settle, where you can browse its range of clothing, housewares, footwear and gifts. From here, we visit **Leighton Hall for their 'Deck the Halls'** where you can tour the house which will be sumptuously dressed for Christmas.



Tuesday A leisurely start to the day to give you the chance to explore Fleetwood before we travel to **Blackpool** to give you time to explore this vibrant seaside town with its many attractions. Early evening you **join the coach for a drive through the world famous lights**, then returning to our hotel for our evening meal.

Wednesday We visit the resort town of **Lytham St Annes**, with its elegant shops, sandy beach and Victorian Pier. We travel to **Gordon Riggs Garden Centre in Rochdale**, where there is a wide range of plants and gardening accessories. In addition, there are departments with homeware, gifts, clothing and pet supplies. We arrive home early evening.

The Hotel

The North Euston Hotel, considered Fleetwood's crown jewel by many is a fine semi-circular building which opened in 1841. It derives its name from the fact that it stood at the end of the railway line from London Euston. The imposing frontage dominates the Fleetwood waterfront and enjoys spectacular panoramic views over the Wyre estuary to Morecambe Bay and the Lake District. It is within a short walking distance of the local shopping centre, just minutes from Fleetwood Market and Fleetwood Freeport Shopping Outlet. Plus with the tram and bus stop across the road you'll find easy transport all along the coast. There are 53 well-equipped en-suite bedrooms, a comfortable lounge to enjoy the peace and quiet, plus meals served in the stylish Bay Restaurant or Victoria Bar by attentive staff who are on hand to look after your needs. Plus FREE WIFI available throughout the hotel. There is a lift to all floors.

Hotel: North Euston Hotel, Esplanade, Fleetwood FY7 6BN. Telephone: 01253 876 525

This 3 day tour includes:

- A full itinerary with visits and tours as described above
- A good quality hotel
- 2 nights dinner, bed & breakfast

Prices (Per Person):

Twin / Double £ 240.00
Single (No availability) £ 240.00

Tour availability updated 19/11/25

Depart Code A

ABBA Voyage

Sunday 8th – Monday 9th November 2026

TOUR
RECENTLY
ADDED

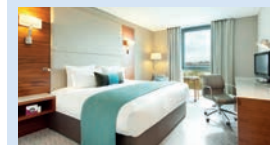


Sunday Departing Bradford at 09.30 we travel with stops en route to our hotel where you will have time to get ready for the spectacular that is **ABBA Voyage**. You will experience **ABBA**, one of the biggest pop acts of all time, on stage in a ground breaking concert in a custom built arena, with a set list of their most popular hits. Here you can see the magic of ABBA brought to life using the latest in motion capture technology with digital versions of themselves.

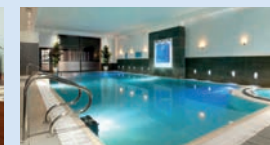
As there is no dinner included tonight you will have a range of choices which include various outlets at the arena, or the hotel restaurant and bar. In addition we will ensure we stop at a motorway services on the way down that has a food retail outlet.

Monday We take the coach to Tower Hill from where you will have until early afternoon to explore the local attractions, or perhaps access the underground. Nearby is Tower Bridge, the Tower of London, with other places of interest including St Paul's Cathedral and Borough Market being in walking distance. We travel home with stops as necessary arriving home mid evening

The Hotel



Our hotel is situated near the ExCel Exhibition centre with views over the Royal Docks. The hotel has 210 smart spacious comfortable bedrooms, a spa area with pool and Jacuzzi, and an Australasian inspired restaurant and bar. The hotel is fully accessible.



Hotel: Crowne Plaza London Docklands, Royal Victoria Dock, E16 1AL

This 2 day tour includes:

- A full itinerary with visits and tours as described above
- A good quality hotel
- Bed & breakfast only

Prices (Per Person):

Twin / Double £ 295.00
Single £ 375.00

Depart Code B

TOUR RECENTLY ADDED

Thursford Christmas Spectacular

Tuesday 24th – Thursday 26th November 2026



THURSFORD
TRULY UNIQUE

Tuesday Departing Bradford 09.00 we travel, with a stop en route, to picturesque **Stamford** with its 17th and 18th century stone buildings and older timber framed buildings. There is a range of shops and cafés to browse.

Wednesday We spend time in **Norwich**, where you have a chance to explore the numerous attractions. Then, the highlight of the tour, a visit to **Thusford**, for the **Christmas Spectacular Show**. Set indoors amongst the collections of traction engines and fairground rides with the sound of the mighty Wurlitzer organ, this is one of the most spectacular Christmas Shows with songs, carols, dazzling dancers in beautiful costumes, outstanding music, singing and variety acts with a cast of over 100 people. The time of the show has yet to be confirmed.

Thursday After a leisurely start we travel to **Springfields Outlet Shopping and Leisure in Spalding**. Springfields has over 50 designer brands including M&S, Next, Pavers and White Stuff. In addition there is a selection of coffee shops, cafés and restaurants to choose from. We arrive home early evening.

The Hotel



The Dunstan Hall Hotel is a 4 star imposing Elizabethan country retreat tucked away in rural Norfolk. Its bedrooms are well known for their comfort and restfulness, plus there is a Spa and Leisure Club in which to relax further. Treatments are available for guests to pre book and pay individually if desired. The restaurant offers delicious food, and the hotels bar overlooks the golf course. The hotel has a lift.

Hotel: Dunston Hall Hotel, Ipswich Road, Dunston, Norwich NR14 8PQ

This 3 day tour includes:

- A full itinerary with visits and tours as described above
- A good quality hotel
- 2 nights dinner, bed & breakfast

Prices (Per Person):

Twin / Double	£ 345.00
Single	£ 425.00

Depart Code B

Coronation Street and the RHS Bridgewater Glow

Friday 4th – Saturday 5th December 2026

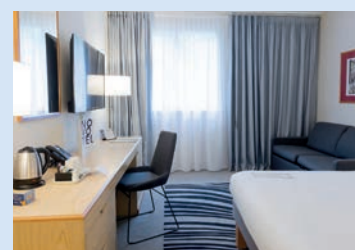


Friday Departing Bradford at 09.30 we first visit the **Trafford Centre** where you can explore over 200 shops and restaurants, and soak up some early seasonal atmosphere, and perhaps indulge in a little

Christmas shopping. We will check in to the hotel to drop bags, before early evening travelling the short distance to **RHS Bridgewater Glow**, a magical winter light show, where you follow the trail taking in the illuminations. We return to the hotel for a late evening meal.

Saturday We enjoy the **Coronation Street Experience**, a behind the scenes tour of Manchester's most famous street. Gain exclusive insights into the making of Coronation Street from the knowledgeable guides as they share stories and trivia. From here, we visit **Salford Quays**, a modern waterfront complex of museums and galleries including the Lowry and Imperial War Museum North. In addition there is a range of shops including M&S and Next outlets. We arrive home early evening.

The Hotel



Hotel: Novotel Manchester West, Worsley Brow, Worsley M28 2YA

This modern hotel has spacious airy rooms with air con, which feature free Wi-Fi, flat-screen TVs, desks, plus tea and coffee making facilities. There is a restaurant and bar. The hotel has a lift. The hotel situated a 5 minute drive from RHS Bridgewater, and 20 mins from Salford Quays.

This 2 day tour includes:

- A full itinerary with visits and tours as described above
- A good quality hotel
- 1 nights dinner, bed & breakfast

Prices (Per Person):

Twin / Double	£ 225.00
Single	£ 280.00

RHS Reduction is not applicable for this special event

Depart Code B

Festive Scotland - Gingerbread and Gin

Monday 7th – Friday 11th December 2026



Monday Departing Bradford at 08.00, we travel north with stops en route including **'The Kelpies'**, which should be illuminated at the time of our visit. We travel via the Forth Road Bridge to our hotel in Perth. There will be a welcome festive fizz before enjoying a 3 course carvery style dinner.

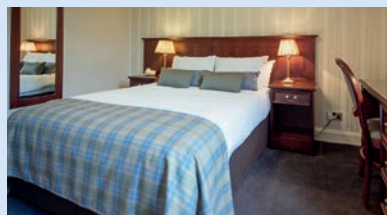
Tuesday We spend the day in **Edinburgh** where we can enjoy the famous Edinburgh Christmas Market. Set in the gardens below the castle, the market has a wide range of stalls, with food, drink, and seasonal gifts to enhance the festive atmosphere. Tonight at the hotel will be a 3 course carvery style dinner and live entertainment.

Wednesday We travel to **Pitlochry**, a bustling town with a range of shops and cafés. In the afternoon, we return to Perth for a sumptuous **'festive themed' mini afternoon tea with gingerbread and a gin cocktail**. Dinner tonight will be served, and there will be live entertainment.

Thursday We visit **Dundee** where the attractions include RRS Discovery, used for Antarctic exploration by Captain Scott and the Victoria and Albert Museum which specialises in design. *(NB no admissions included)*. With Dundee's connection with children's comics, there are statues of well known characters situated throughout the city. We return to Perth with time to browse its attractions.

Friday We travel home with stops as required, which will include one of the garden centres in the Borders. Here will be a wide selection of food and drink including seasonal offerings as well as a range of gifts for you to browse. We arrive home early evening.

The Hotel



Dating from 1699, this relaxed 3 star historic hotel in the centre of Perth, is a 2-minute walk from the River Tay. There are 84 bedrooms each different in size, that have traditional furnishings and come with free Wi-Fi, TVs, and tea and coffee making equipment.

The restaurant serves meals using local produce where possible and is part of Visit Scotland's "Taste our best" promotion. There is also a popular bar in which to relax. The hotel has a lift.

Hotel: The Salutation Hotel, South Street, Perth PH2 8PH

This 5 day tour includes:

- A full itinerary with visits and tours as described above
- A good quality hotel
- 4 nights dinner, bed & breakfast

Prices (Per Person):

Twin / Double	£ 445.00
Single	£ 515.00

Depart Code A

Black Country Museum at Christmas and Birmingham Christmas Market

Thursday 17th – Saturday 19th December 2026



Thursday Departing Bradford at 09.00 we travel, with a stop en route, to **Trentham Shopping Village**, with over 80 timber lodges. There is a wide selection of outlets including clothing, footwear, jewellery, pet supplies, cafés as well as an extensive garden centre.

Friday We visit the **Birmingham Frankfurt Christmas Market**, which is the largest authentic German Christmas market outside Germany and Austria. Situated in the centre of the city, the market has a fantastic festive atmosphere with stalls offering food, drinks, and seasonal gifts.

Saturday The **Black Country Living Museum** is an open-air museum of rebuilt historic buildings, with over 50 shops, houses and industrial buildings focusing on 250 years of history. Here you can enjoy roaming musicians, mulled wine and open coal fires, and wander through the decorated streets, browsing the festive market stalls. We arrive home early evening.

The Hotel



Hotel: Mercure Telford Centre Hotel, Forge Gate, Telford TF3 4NA

The Mercure Hotel is situated in central Telford and has a theme of the local "Ironbridge" which features in its decoration. There are 153 comfortable well appointed bedrooms with tv, tea/coffee making facilities, with many having walk in showers. The public areas are light and spacious, with a restaurant, bar, lounge and foyer to sit in, plus there is an on site leisure club with an indoor pool. The hotel has a lift.

This 3 day tour includes:

- A full itinerary with visits and tours as described above
- A good quality hotel
- 2 nights dinner, bed & breakfast

Prices (Per Person):

Twin / Double	£ 305.00
Single (No availability)	£ 380.00

Tour availability updated 19/11/25

Depart Code B

TOUR
RECENTLY
ADDED

Christmas Festivities in Wales

Wednesday 23rd – Sunday 27th December 2026

Wednesday Departing Bradford at 09.30, we travel to **High Legh Garden Centre** where, in addition to the normal gardening items, there is a wide range of cookware, gifts, food and drink. We then travel on to **Nantwich**, an historic town with a high concentration of listed buildings with a choice of shopping including craft shops and antiques. **At the hotel there will be live entertainment on 3 nights and in house activity such as bingo or a quiz on 1 day.**



Thursday (Christmas Eve) We visit **Chester**, with its range of attractions including the magnificent Cathedral, the Roman walls and a range of shopping opportunities including the famous two tier 'Rows'.

Friday (Christmas Day) A leisurely day at the hotel, with carols before a three course Christmas Dinner and a visit from Father Christmas. In the evening there will be a light buffet dinner.

Saturday (Boxing Day) If you wish you can join us for a drive to **Llandudno** to get some bracing sea air, or if you wish relax in the hotel. Either way there will be a Luxury Afternoon Tea served in the hotel.

Sunday We start the journey home by visiting **Liverpool**, with its numerous attractions, including the pedestrianised Liverpool 1 shopping area. The Albert Dock has a range of shops, restaurants, galleries, and museums reflecting the cities maritime and musical history. We arrive home early evening.

The Hotel

The Beaufort Park hotel is located in a village 2 miles from Mold in North Wales, and 11 miles from Chester. It has 107 well appointed bedrooms equipped with TV, hairdryer and tea/coffee making facilities. The hotel does not have a lift but 30 rooms are on the ground floor. There is an informal restaurant, cosy bar and lounge.

Hotel: Beaufort Park Hotel, New Brighton, Mold CH7 6RQ

This 5 day tour includes:

- A full itinerary with visits and tours as described above
- A good quality hotel
- 4 nights dinner, bed & breakfast

Prices (Per Person):

Twin / Double	£ 575.00
Single	£ 635.00

Depart Code B

TOUR
RECENTLY
ADDED

New Year Celebration in Scotland

Wednesday 30 December 2026 – Saturday 2nd January 2027



Wednesday Departing Bradford at 09.00 we travel with a mid-morning stop en route to **Carlisle**. Carlisle has a range of attractions with a variety of shopping which includes the indoor 'The Lanes', and the historic Castle and Cathedral. On then to our hotel.

Thursday (New Years Eve) We travel to **Edinburgh** where you will have a chance to take in the many attractions and pre new years eve atmosphere. We return in time to enjoy a glass of fizz before our gala **New Year's Eve Dinner**, with live entertainment, where dress code will be "black tie" or "formal" – casual not permitted.

Friday (New Year's Day) A leisurely day where you can either relax in the hotel enjoying the facilities or join us for a drive out. We'll be heading over the Kincardine Bridge then re-crossing the Firth of Forth by the Forth Road Bridge before stopping at South Queensferry where you can view the three bridges spanning the river including the iconic Forth Rail Bridge. We stop to view **'The Kelpies'** on the way back to the hotel, where there will be in-house entertainment tonight.

Saturday We visit the ever popular **Caledonia Park Designer Outlet** (formerly Gretna Gateway) with over 50 outlets including M&S Outlet, Next, Pavers and Lindt. From here we travel home with a further stop at **Tebay** arriving home early evening

The Hotel

This hotel is set in 120 acres of glorious Scottish countryside overlooked by the Campsie Hills, yet only 12 miles from the centre of Glasgow. It is a 4 star hotel with a spa and health club which includes a pool, sauna, steam room and jacuzzi. (NB any spa treatments would be chargeable). It has spacious bedrooms which include tv, hairdryer and tea/coffee making facilities. Fine dining takes place in the Grill or Flemmings Restaurant, with refreshments available on comfy sofas in the lounge. The hotel has a lift.

Hotel: Doubletree by Hilton Glasgow Westerwood Spa & Golf Resort, St Andrews Drive, Cumbernauld G68 0EW

This 4 day tour includes:

- A full itinerary with visits and tours as described above
- A good quality hotel
- 3 nights dinner, bed & breakfast

Prices (Per Person):

Twin / Double	£ 585.00
Single (Double/twin for sole use only)	£ 735.00

Depart Code A

Bonded Coach Holidays - Trading Charter (and Booking Conditions)

1. Financial Protection

Your contract is with JAK Travel Ltd, 368 Bradford Road, Keighley, BD20 5LY. When you book a holiday with us, which does not include a flight, the money you pay for the booking will be protected by Bonded Coach Holidays (BCH) and the Association of Bonded Travel Organisers Trust Limited (ABTOT), this is a Government approved consumer protection scheme. The scheme will also ensure your repatriation in the event the company becomes insolvent. Our Trading Charter and Booking Conditions set out clearly and simply the responsibility we have to you and in turn, you have with us, when a contract is made. Please see the Consumer Guarantee at <https://www.abtot.com/bch-abtot-members-directory/> There is no financial protection if you purchase just transport or accommodation-only from us. We fully comply with the Package Travel and Linked Travel Arrangements Regulations 2018. The combination of travel services offered to you is a package holiday within the meaning of the Regulations. Therefore, you will benefit from all rights applying to package holidays. JAK Travel Ltd will be fully responsible for the proper performance of the holiday and providing assistance if you are in difficulty. Your key rights will be in the details of the tour which will be provided prior to booking.

2. Booking and Payment

When a booking is made, the 'lead name' on the booking guarantees that he or she is 18 or over and has the authority and accepts on behalf of the party the terms of these booking conditions and pays the deposit indicated in the brochure and as confirmed in the pre-contract information. After we receive your booking and all appropriate payments, if the arrangements you wish to book are available, we will send you or your booking agent a confirmation invoice within 14 days. This confirmation will include any special requests we have agreed. A binding agreement will come into existence between us when we have received the deposit and dispatched this invoice to the 'lead name' or your booking agent. Please check the confirmation carefully to ensure all the information is correct. This contract is governed by English Law, and the jurisdiction of the English Courts.

Single occupancy of rooms, when available, may be subject to a supplementary charge and these will be shown in the brochure. You can book by paying a deposit for each person named on the booking, but our commitment is always conditional upon the balance being paid as below.

Deposit £25.00 per person. The balance of the price of your holiday must be paid at least 8 weeks before your departure. If you book within our balance due period, you will need to pay the total holiday cost at the time of booking. If the balance is not paid in time, we reserve the right to cancel your holiday, retain your deposit, and apply the cancellation charges set out in the paragraph below. The date of cancellation will normally be the date we receive your written confirmation that you intend to cancel or 15 days after the balance due date, whichever comes first.

Where optional items are purchased as part of the holiday, these are payable on the balance due date except where items, such as theatre tickets, have been specifically purchased for you. In this case the cost will be payable at a separate date notified to you and will not normally be refunded unless we obtain a refund from the supplier we use.

Whilst these terms are applicable to all bookings of any number of customers, for some group bookings there may be additional terms or information – we will provide those to you at the relevant time.

3. Brochure Accuracy

Although JAK Travel Ltd make every effort to ensure the accuracy of the brochure information and pricing, regrettably errors do sometimes occur, and where they do we reserve the right to correct prices and other details. You must therefore ensure you check the price and all other details of your holiday with us at the time of booking and when you receive our confirmation invoice.

4. Our Pricing Policy

JAK Travel Ltd endeavour to ensure that the most up to date and correct prices are shown in our brochure. Occasionally, an incorrect price may be shown, due to an error. When we become aware of any such error, we will endeavour to notify you at the time of booking (if we are then aware of the mistake) or as soon as reasonably possible. We reserve the right to cancel the booking if you do not wish to accept the price which is applicable to the holiday. Local Authorities in many towns and cities throughout Europe have introduced new tourist taxes which must be paid directly to the hotel by all guests in person. These taxes are not included in our prices, but we will notify you when applicable. Holiday prices include all travel, hotel accommodation and

meals as specified in the holiday description and VAT payable in the UK where applicable. The price of the holiday will not be subjected to any surcharges except those arising from exchange rate changes, transportation including the price of fuel, air & ferry operator fares and tolls, embarkation or disembarkation fees at terminals, duties and taxes (including the rate of VAT). If this means the total cost of the holiday increases by more than 8% then you are entitled to cancel your holiday and receive a full refund of all monies paid except any insurance premium and amendment charges. We will communicate the options with you either through email or letter, with a reminder if necessary. If you exercise the right to cancel, we must receive written notice within 20 days of the date of the surcharge invoice. The currency exchange rate used in the holiday costings are based on rates as at 17/11/2025]

5. If you change your booking

If, after our confirmation has been issued, you wish to change to another of our holidays or change departure date, we will do our utmost to make the changes, but we cannot guarantee to do so. However, notification must be received in writing at our offices from the person who signed the booking form, at least 6 weeks before departures. This must be accompanied by a payment of £10.00 to cover our administrative costs, plus costs we incur in making the amendment. Alterations cannot be made within 6 weeks of departure and any such request for an alteration will be treated as a cancellation of the original booking and will be subject to the cancellation charges set out in paragraph below. Some arrangements cannot be changed without paying a cancellation charge of up to 100% of the ticket cost.

6. Transferring your booking

You can transfer your booking to somebody else, but the person must satisfy all the conditions of the holiday and you must inform us either by letter or email no less than 7 days before departure. This transfer will cost £10.00 plus reasonable costs to make the transfer. You will remain responsible for ensuring payment before the balance due date. This is in addition to (and does not affect) the separate liability of the transferee to us.

7. If you need to cancel your holiday

You or any member of your party, may cancel your holiday at any time provided the cancellation is made by the person signing the booking form and is communicated to us in writing via the office who made your original booking. You must pay cancellation charges to cover our administration costs and to compensate for the risk of us not reselling the holiday. If the holiday is resold a refund will be made. Your cancellation will take effect from the date on which we or our agent receive your written confirmation of your cancellation. You must also return any tickets or vouchers you have received. A reduction in room occupancy may increase the charges for the remaining passengers by the application of supplements for low occupancy of rooms. Where bought in supplies, such as ferries, hotel accommodation etc have been bought in on your behalf, and where the terms and conditions of the supplier are non-refundable, these products will be charged to you at the full retail rate. If this applies, the non-refundable items will be deducted from your holiday costs and the following scale of charges will be applied to the remainder:

Period before departure within which written cancellation of package price is received	Amount of cancellation Charge as a % of total package cost
More than 56 days	Deposit only
55 - 49 days	30% or Deposit, if greater
48 - 22 days	50%
21 - 8 days	70%
7 - 1 days	90%
Departure day or later including voluntary termination during the package	Total Package Cost

You may cancel your holiday without paying any termination fee before the start of the holiday, in the event of unavoidable and extraordinary circumstances occurring at the place of destination or its immediate vicinity, for instance, if there are serious security problems at the destination which are likely to affect the package.

8. Alterations to your holiday by us

We hope that we will not have to make any change to your holiday but, because our holidays are planned many months in advance, we sometimes do need to make minor changes. We reserve the right to do this at any time. We will let you or your

booking agent know about any important changes as soon as possible, including the minimum number of passengers required on the trip. If after booking, and before departure, we make a major change to your holiday, you will have the option of withdrawing from the holiday without penalty or transferring to another holiday without any charge. In either case, we will pay you compensation, according to the scale set below. A major change includes the time of your departure or return time by more than 12 hours, a change in departure point, location of resort or type of hotel, a change in cross channel travel, or specification of the coach. If we tell you about any of these changes after we have confirmed your holiday booking (other than force majeure), you may either:

- accept the new arrangements offered by us; or- accept a replacement holiday from us of equivalent or similar standard and price (at the date of the change), if we can offer you one; or
- cancel your holiday with us and receive a full refund of all monies.

Either way, we will pay you compensation, using the Compensation table shown,

Period before departure in which significant change is notified to you or your agent	Amount per person
More than 28 days	Nil
21 days to 27 days	£10
15 to 20 days	£15
8 to 14 days	£20
0 to 7 days	£25

IMPORTANT NOTE Compensation will not be payable if the holiday is cancelled because the number of persons booked is less than the number required, or for events beyond our control, which include: war, threat of war, riots, civil disturbances, terrorist activity and its consequences, industrial disputes, natural and nuclear disasters, fire, epidemics, health risks and pandemics, unavoidable and unforeseeable technical problems with transport for reasons beyond our control or that of our suppliers; hurricanes and other actual or potential severe weather conditions and any other similar events. You are also advised to check with The Foreign and Commonwealth Office Advice Unit regularly at <https://www.gov.uk/browse/abroad/travel-abroad> prior to travel. All holidays operate if the minimum number of participants is met. However, in no case will we cancel your holiday less than 2 weeks before the scheduled departure date, except where you have failed to pay the final balance or because of force majeure (force majeure means an event which we or the suppliers of the services in question could not foresee or avoid and is therefore beyond our control).

9. Our responsibility to you

We accept responsibility for ensuring the holiday which you book with us is supplied as described in our publicity material and the services offered reach a reasonable standard and if you are in difficulty, we will assist you. If any part of our holiday contract is not provided as promised, you may terminate the contract without paying a termination fee and we will pay you appropriate compensation if this has affected your enjoyment of your holiday. We will, however, not be liable if there are any unforeseeable or unavoidable actions of a third party not connected with our travel services (as confirmed in the confirmation invoice and any other information we provided to you regarding the services), or there were unavoidable or extraordinary circumstances, or the lack of conformity is due to a traveller in the party. We accept responsibility for the acts and/or omissions of our employees, agents and suppliers except where they lead to death, injury or illness. Our liability in all cases shall be limited to a maximum of three times the value of the original holiday cost (not including insurance premiums and amendment charges). We accept responsibility for death, injury, or illness caused by the negligent acts and/or omissions of our employees or agents together with our suppliers and sub-contractors, servants and/or agents of the same whilst acting within the scope of, or during their employment in the provision of your holiday. We will accordingly pay to our clients such damages as might have been awarded in such circumstances under English Law. In respect of carriage by air, sea, tunnel and rail and the provision of accommodation our liability in all cases will be limited in the manner provided by the relevant international convention.

If we make any payment to you or any member of your party to death or personal injury or illness, you will be asked to assign to us or our insurers the rights you may have to act against the person or organisation responsible for causing the death,

personal injury or illness. This clause does not apply to any separate contracts that you may enter for excursions or activities during or outside of your holiday. If you or any member of your party suffer death, illness or injury whilst overseas arising out of an activity which does NOT form part of your holiday, we may offer guidance and where legal action is contemplated and you want our assistance, you must obtain our written consent prior to any proceedings (We limit the cost of our assistance to you or your party to £5,000 per party)

10. If you have a complaint

If you have a problem during your holiday, please inform your Tour Manager, your driver or the relevant supplier/resort representative immediately who will endeavour to put things right. If your complaint cannot be completely resolved locally, you must complete a Holiday Report Form which can be obtained by your driver or local representative, which you should keep. Our contact number, for unresolved complaints will be our office number on 01274-56620 (open in office hours) If you remain dissatisfied please follow this up within 14 days of your return home by writing to JAK Travel Ltd giving your original booking reference number and all other relevant information, including the reference of the Holiday Report Form. It is therefore a condition of this contract that you communicate any problem to the supplier of the services in question AND to our representative whilst in resort and obtain a written report form. If you fail to follow this simple procedure, we cannot accept responsibility as we have been deprived of the opportunity to investigate and rectify the problem. Should you wish to pursue the complaint further, BCH ABTOT have an Alternative Dispute Resolution scheme and full details are available from them. Please contact them at ABTOT 69 Leadenhall Street London EC3A 2BG.

11. Our Coaches

We will always use our reasonable endeavours to provide a coach to the specification in our brochure or advert but reserve the right to substitute an alternative vehicle should there be unforeseen circumstances. There is a seating plan but, in some cases, operational reasons may require a coach with a different configuration. We reserve the right to alter a coach seating plan and allocate seats other than those booked. Single passengers may be required to share a double seat with other single passengers. When your booking is confirmed, you will be offered the best seats that are available at that time. If you feel that you require two seats, then these must be booked and paid for in advance, at the time of booking. If you fail to do this and it transpires that the seat allocated to you is insufficient for your needs and there is no alternative seating available, then you will be refused access to the coach and any payments made will be liable to forfeiture.

Specific seats will not be allocated on coaches operating a feeder service between joining points and main holiday departure points or on coaches that carry out transfers between airports, seaports etc.

NO SMOKING is allowed on our coaches (including E-Cigarettes) and we do not allow pets or any other animals, although we accommodate registered assistance dogs, but not on overseas holidays.

12. Hotel Facilities

Some hotel facilities and entertainment may be withdrawn for routine maintenance or be subject to seasonal availability and provision of the facilities cannot be guaranteed. Single occupancy of rooms may be subject to a supplementary charge.

13. Health and Safety

In some foreign countries, standards of infrastructure, safety and hygiene may be lower than those to which we are accustomed in the UK. You should therefore exercise greater care for your own protection. There may be countries that we visit that have special medical requirements for tourists. These regulations are subject to change and our clients are responsible for complying with entry and current health requirements. If you are not sure of the health requirements for the country you are visiting, you are advised to check with your own GP before travelling. You are also advised to refer to the Department of Health leaflet "Health Advice for Travellers".

Some people may be at risk from discomfort or deep vein thrombosis (DVT) if they remain immobile on a journey for a long period. If you are planning to undertake a journey of more than three hours, you should consult your doctor, if you have ever had DVT, pulmonary embolism, a family history of clotting conditions, cancer or treatment for cancer, stroke, and heart or lung disease or if you have had major surgery in the past three months. We reserve the right to refuse any booking in the absence of a doctor's certificate confirming that you are fit to travel. Where we provide comfort stops you are encouraged to walk around. Exercise reduces any discomfort, which may be caused by periods of immobility.

14. Travel documents, itineraries, pick-up points and passports

We can only provide general information regarding entry, passport, visa, immigration requirements and safety and health formalities applicable to your package itinerary. It is your responsibility to check such requirements (in good time before departure), in order to make your decisions to fulfil such requirements regarding your destination and/or the country(ies) through which you may be transiting through. Such information which you may need to check includes (but is not limited to) passport requirements including (but not limited to) how valid your passport must be after return date, whether your passport must be machine readable, or which visas may be required for entry such as ETA for UK travel and/or ETIAS for EU travel.

You must check requirements for your own specific circumstances with the relevant bodies as applicable. We have provided a few useful resources below, though it is **your responsibility to check and see if such body would be relevant to yourself.**

- the Foreign, Commonwealth and Development Office ("FCDO", <https://www.gov.uk/travelaware/>) (applicable to UK residents);
- UK Passport Office (0870 5210410) or <https://www.gov.uk/browse/citizenship>.
- Embassies, High Commission and/or Consulates;
- own doctor.

For UK residents booking European travel, you should obtain a UK Global Health Insurance Card (UK GHIC) prior to departure unless you are able to rely upon an existing European Health Insurance Card (EHIC). For travel to Norway, Iceland, Liechtenstein and Switzerland, UK GHIC and EHIC can not be used for medical treatment. Passengers to these destinations should obtain comprehensive medical insurance prior to departure, including cover for emergency medical treatment and associated costs.

We do not accept any responsibility if you cannot travel, or incur any other loss because you have not complied with any entry, passport, visa, immigration requirements or health formalities. You agree to reimburse us in relation to any fines or other losses which we incur as a result of your failure to comply with any entry passport, visa, immigration requirements or health formalities.

You are responsible for ensuring you are at the correct departure point, at the correct time and with the correct documents. JAK Travel Ltd reserve the right to modify itineraries to conform with requests from competent authorities both within the UK and abroad.

15. Special Requests & Excursions

All special needs and requests, if agreed, should be entered on the booking form and be included in the confirmation of the holiday. These cannot be guaranteed except where confirmed as part of our holiday commitment to you and are detailed on your holiday booking confirmation. We are keen to ensure that we plan the arrangements for your holiday so that special needs and requests can be accommodated as far as possible. If you will need assistance or may be unable to fully enjoy all aspects of your holiday you must tell us in advance so that we can maximise your enjoyment of the holiday. We will need to know if you will need special facilities in the hotel, taking part in the excursions or have difficulty boarding and travelling on the coach or other means of transport. Before booking your holiday, you should be sure that you and your party are both physically and mentally capable of completing the itinerary. If you need advice or further information either you or your booking agent should contact JAK Travel Ltd if you will require a special diet please tell us at the time of booking, or as soon as you are medically advised, together with a copy of the diet.

Excursions which are included in the cost of your booking are detailed on the brochure page and refunds will not be made for excursions not taken. Optional excursions booked and paid for in resort do not form part of your booking. Admission fees to buildings may not be included in the price of the holiday, please check.

16. Passengers with disabilities

We want everyone to enjoy our travel arrangements. We are happy to advise and assist you in choosing a suitable holiday. It is important that, when booking, you advise us of any disability, specific need or complex need you may have and any special requirements that will make sure the holiday is suitable. If a passenger requires personal assistance (for example, assistance with feeding, dressing, toileting, mobilising) then this passenger must travel with an able-bodied companion or carer and written confirmation that such assistance will be provided for the

entirety of the holiday is required at the time of booking. Coach drivers/Tour Managers are unable to provide such assistance. **IMPORTANT** You must tell us if you have an existing medical condition, disability or complex need that may affect your holiday or other group members' enjoyment of it before you book your holiday. We reserve the right to request a doctor's certificate confirming the passenger is fit to travel. If, in our reasonable opinion, your chosen holiday is not suitable for your medical condition or disability, we reserve the right to refuse your booking. You are responsible for bringing with you the proper clothing and equipment, which we advise you about in our printed trip information. We want you to enjoy your holiday and will help you select an appropriate trip.

17. Passenger Behaviour

We want all our customers to have a happy and carefree holiday. You are responsible for your behaviour and hygiene and the effect it may have on others. If you or any other member of your party is abusive, disruptive or behaves in a way that could cause damage or injury to others or affect their enjoyment of their holiday or which could damage property, we have the right to terminate your contract with us and we will have no further liability or obligation to you. The coach driver/representative, ship's captain, or similar, authorised official is entitled to refuse you boarding if in their reasonable opinion you are unacceptably under the influence of drink or drugs or you are being violent or disruptive. If you are refused boarding on the outward journey, we will regard it as a cancellation by you and we will apply cancellation charges. If on your return journey, we have the right to terminate the contract with you. We also request that mobile telephones are not used on the coach.

18. Travel Insurance

We strongly advise that you take out personal travel insurance for the trip. We no longer arrange travel insurance, but can make suggestions who to contact, provided, You may use an alternative insurer of your choice. The insurance should cover medical and repatriation costs, personal injury, loss of baggage and cancellation charges. If you do not have adequate insurance and require our assistance during your holiday, we reserve the right to reclaim from you any medical repatriation or other expenses which we may incur on your behalf which would otherwise have been met by insurers. You must advise us if you use an alternative insurer, the policy number and 24-hour contact number.

19. Luggage

Please restrict your luggage to a suitcase weighing no more than 18 kgs per person. We cannot accept responsibility for loss or damage to luggage unless through our negligence. Please do not leave valuable items in your suitcase when left on the coach. Please contact us for our policy on mobility scooters.

20. Conditions Of Suppliers

Many of the services which make up your holiday are provided by independent suppliers. Those suppliers provide these services in accordance with their own terms and conditions which will form part of your contract with us. Some of these terms and conditions may limit or exclude the supplier's liability to you, usually in accordance with applicable International Conventions. Copies of the relevant parts of these terms and conditions are available on request from us or the supplier concerned.

21. Advanced Passenger Information

A number of Governments are introducing new requirements for our suppliers to provide personal information about all travellers to the Authorities prior to travellers arriving at the destination. The data will be collected either at the time of or after a booking is made. Where we collect this data, we will treat it in accordance with our Privacy Policy.

22. Emergency Contact

Our emergency contact details are Tel: 01274-566200 - office hours (An out of hours emergency number is given on our answer machine message). Email: office@jaktravel.co.uk



PUBLICATION DATE This brochure was printed in the UK by B&D Print Services - Jan2026

Great reasons to travel with us!



All Tours are **Fully Bonded** - we are members of Bonded Coach Holidays (the coaching equivalent of ABTA).



Excursions are included - there are no 'optional' extra cost tours and admissions to main venues are usually included - if not we will tell you clearly in the brochure.



Frequent Breaks - we aim to stop every two to three hours - even on long journeys and NO overnight coach travel.



Good Quality Hotels - All tours have en suite bathrooms and are usually three star rated (sometimes even four star!)



Parking Available - We can offer FREE parking for your car in our Depot compound



No feeder coaches - you stay on the same coach throughout and no long pick up run either! Our pick up run is normally completed within 45 mins.



No compulsory Insurance - we do recommend that you are insured and have the European Health Insurance card for overseas travel, but you are free to shop around.



Air Conditioned Coaches - which is especially welcome on the summer tours! Most of our tours also have an on board toilet.



A **friendly, local**, professionally run company that is a member of the professional Trade body for the Coach Industry; the Confederation of Passenger Transport; We are happy to talk to you, to receive your feedback - and, hopefully, your praise!

We also offer:

- Day Excursions
- Coach Hire
- Private Group Tours



Gift Vouchers Available

These can be for a specific amount or a specific tour - your choice!

Call the office for details

J.A.K. Travel Ltd

368 Bradford Road, Sandbeds, Keighley. BD20 5LY

Telephone: 01274 566200

Email: office@jaktravel.co.uk

Web: www.jaktravel.co.uk

